

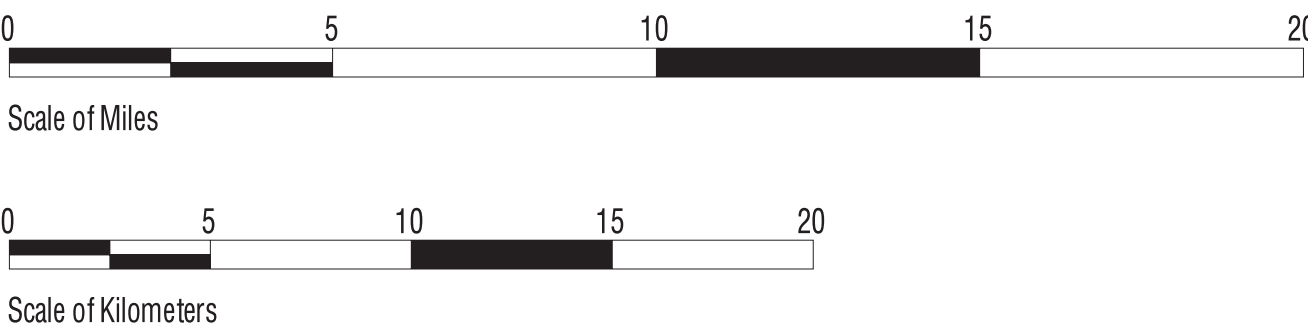
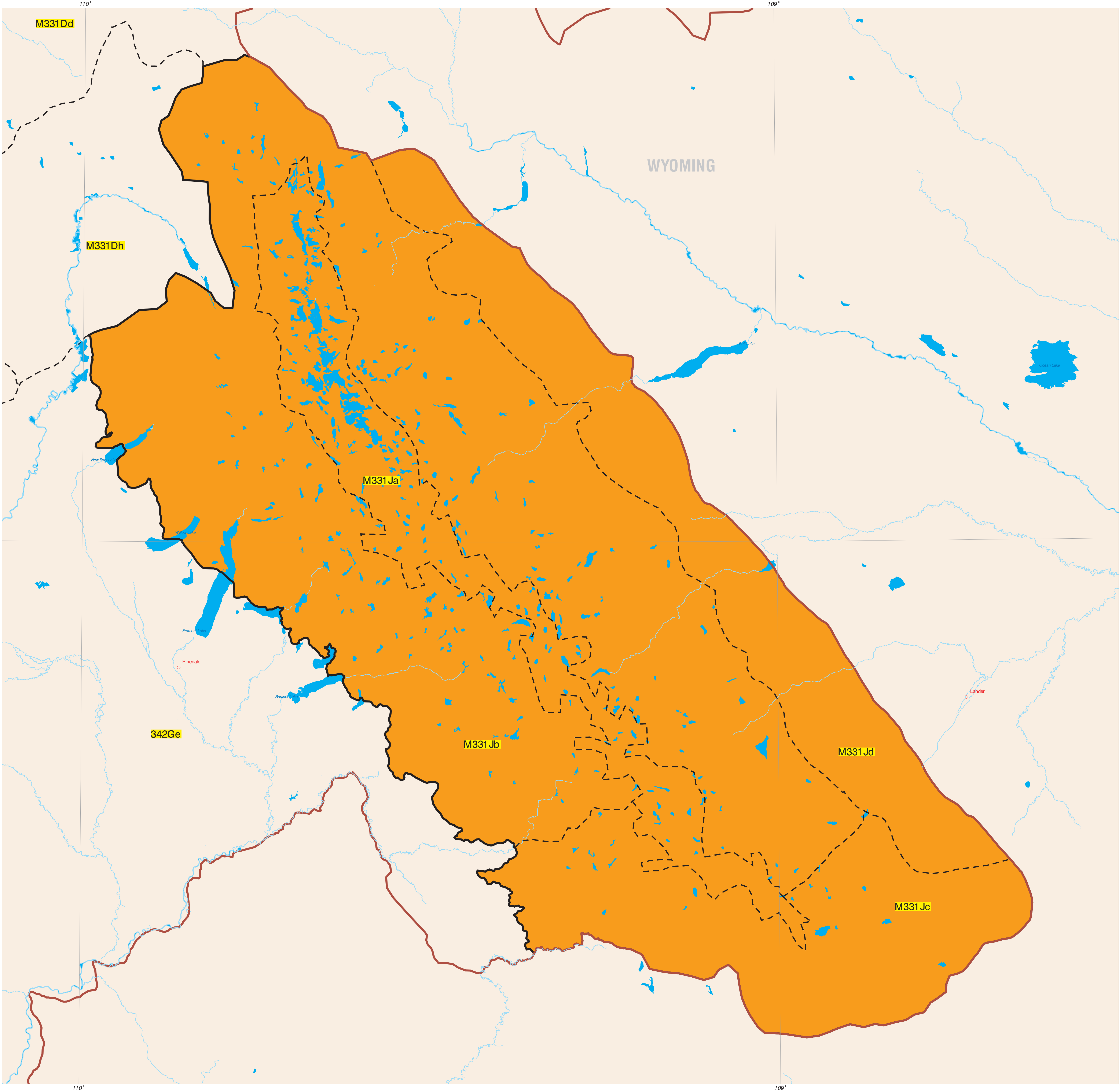


SUBSECTIONS WITHIN - WIND RIVER MOUNTAINS SECTION - M331 J

NRCS
Natural Resources
Conservation Service

LEGEND

- M331A Yellowstone Highlands
- M331D Overthrust Mountains
- M331J Wind River Mountains
- M332D Belt Mountains
- M332E Beaverhead Mountains
- 342A Bighorn Basin
- 342D Snake River Basalts
- 342G Green River Basin
- Water
- Study Area
- Subsections
- Sections
- State Border
- River or Stream



Section and Subsections delineated by Region One USFS
according to National Ecological Mapping Hierarchy
General Technical Report INT-GTR-369 October 1997.
Other base data from various source; U.S. Census TIGER files,
ESRI ARCUSA 1:2M edition.

